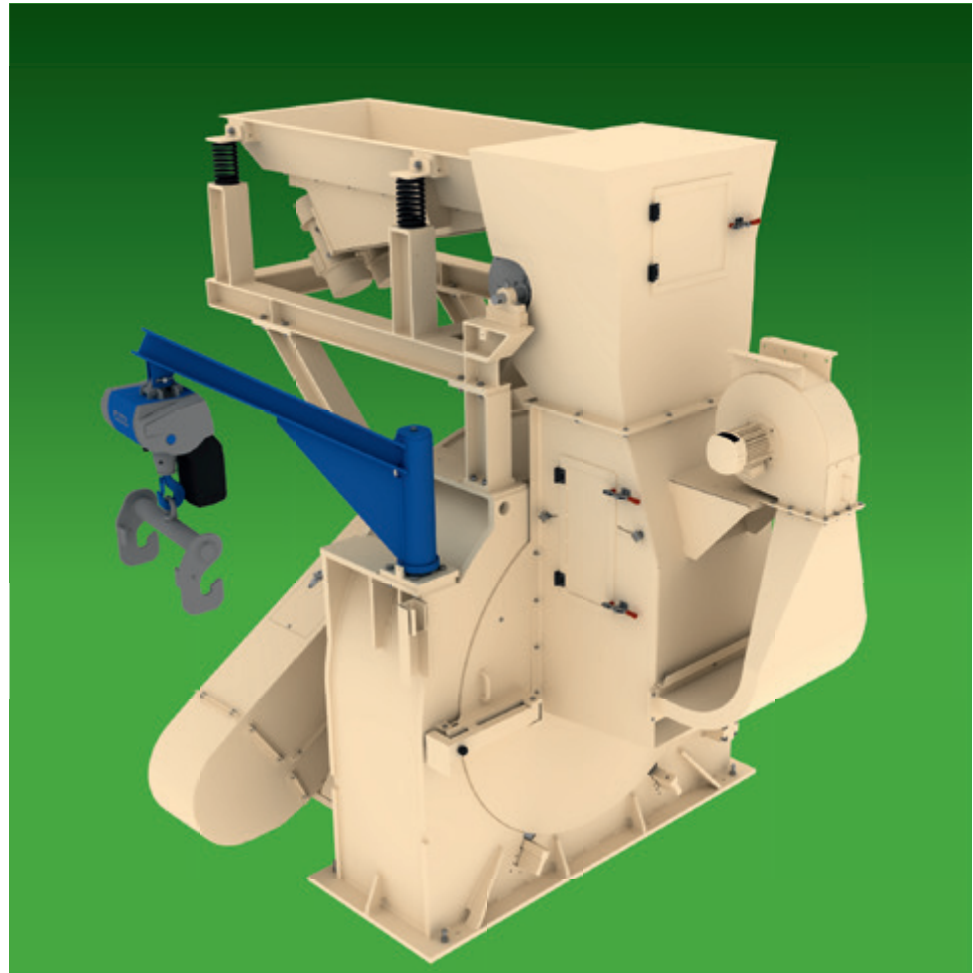




**ML WOOD**

# Knife Ring Flaker ML-KRF



Cost-efficient production of thin flat flakes

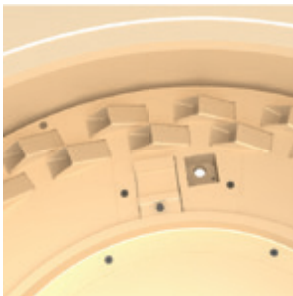
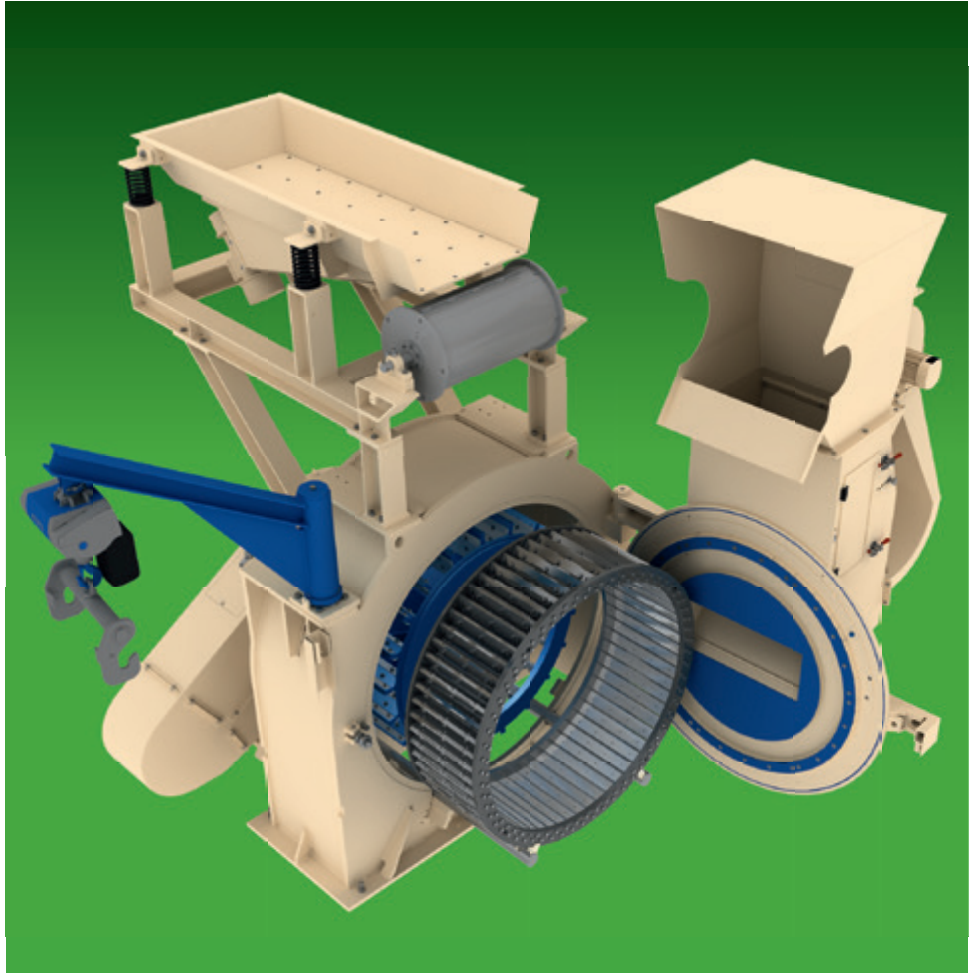
- Energy saving
- 1200 or 1400 rpm
- Wide range of flake thickness



**ML WOOD**

## Cost-efficient production of flakes

- Advanced and reliable technology
- Consistently high flake quality
- Low-maintenance
- Service-friendly
- Guaranteed long running time
  
- Crane with swing arm
- Direct drive
- Knife ring removal
- Door locking device
- Rotor brake
- Lining of casing



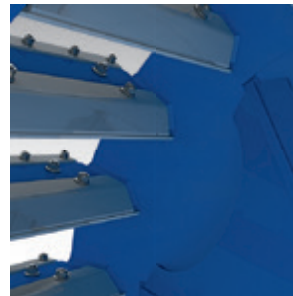
### Air guiding

The air extracted from the built-in fan supports the flake discharge from the knife ring by using the directed nozzles.

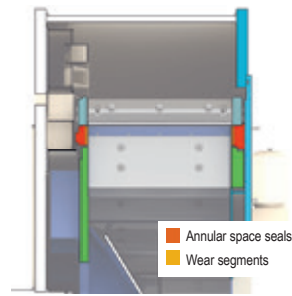


### Rotor

Cost-reducing wear protection by protecting the main body, chip guiding plate with edge protection and overlapping of rotor knife.



### Rotor shovel protection



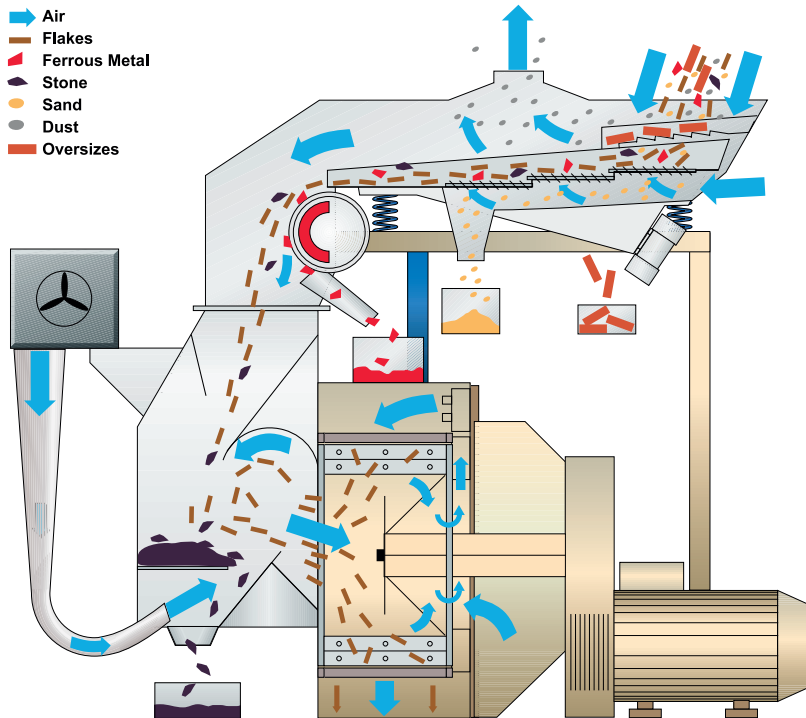
### Annular space seal

The discharge of coarse flakes is prevented by sealing rings with wear segments which are divided and quickly replaceable.



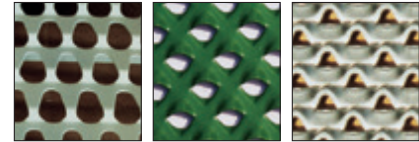
**ML WOOD**

## The integrated cleaning system



- Adjustable cleaning level
- Low maintenance
- Low energy costs

### Screens



Oversize > 60 mm

Micro chips 8 - 25 mm

Fine material 3 - 6 mm

After oversizes have been screened out, the chips can be divided into micro chips and fine material by means of the three screen levels equipped with different screen perforations.

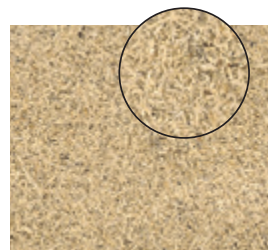
The fine material is either transported to the discharge conveyor using a bypass or fed into a combustion plant. The magnetic drum equipped with adjustable discharge point separates the ferrous particles and moves the chips to the wind sifter to separate heavy parts.

The size and degree of fineness of the impurities to be separated can be adjusted precisely by the amount of air and the cascade setting. The excess air not removed through the flake gap is extracted through the rear wall of the rotor.

The air flow compressed by the built-in fan supports the removal of flakes from the top of the knife ring.

## ML Wood 1400 rpm for Surface Layer Flakes

- Production of finest flakes
- 1400 rpm
- Power saving



Surface layer flakes < 0.25 mm



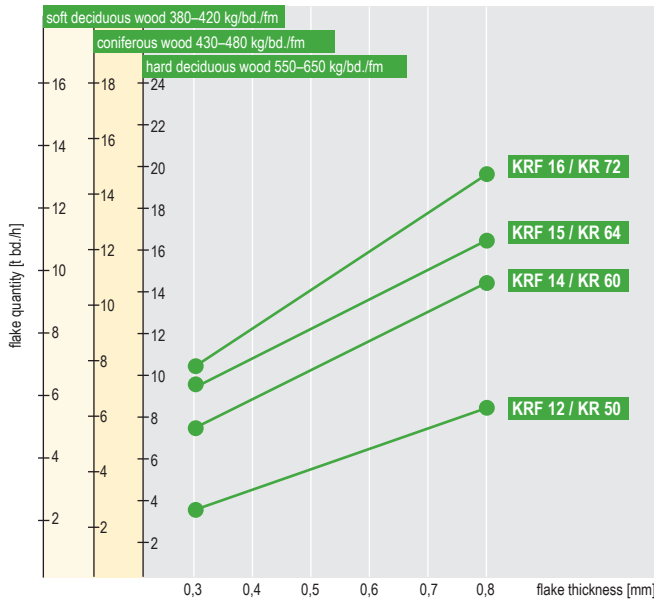
Surface layer flakes > 0.25 < 0.5 mm



Flakes for homogeneous boards



**ML WOOD**

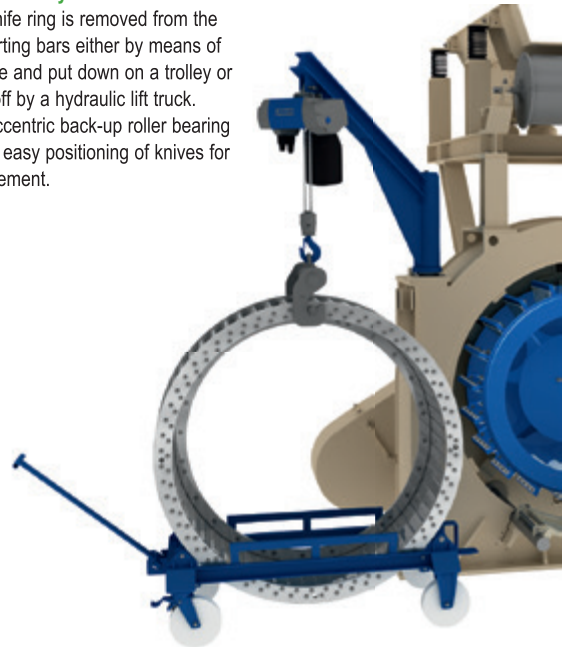


**KRF performance specifications in relation to type of wood / flake thickness**

## The easy way to change a knife ring ...

### Crane / Trolley

The knife ring is removed from the supporting bars either by means of a crane and put down on a trolley or lifted off by a hydraulic lift truck. The eccentric back-up roller bearing allows easy positioning of knives for replacement.



## Knife Ring Flaker 12 – 16 | 1200 rpm or 1400 rpm

Type of Flaker	Type of knife ring	Length / width x height <sup>1)</sup> (m)	Input power kW	Self-propelled air volume (m <sup>3</sup> /h)	Number of rotor blades	Length of knife (mm)	Number of flaking knives	Productive capacity (t bd./h) <sup>2)</sup>	Weight (t)
12	KR 50	1,4 / 2,2 x 2,9	160/200	8.000	18	333	50	4 - 8	6
14	KR 60	1,7 / 2,4 x 3,0	250/315	10.000	21	463	60	6 - 12	8
15	KR 64	1,8 / 2,5 x 3,0	250/315	12.000	23	543	64	6 - 15	9
16	KR 72	1,8 / 2,7 x 3,3	355/400	14.000	25	648	72	7 - 20	10

Subject to technical modifications. Some of the machine equipment described here is available as an option. Upon inquiry, machines with a ring diameter of 800 mm or 1,000 mm can be delivered. <sup>1)</sup> Height relating to the distance between floor and upper edge of swing arm. <sup>2)</sup> Productive capacity depends on bulk weight of fed-in chips.

### ML WOOD

B. Maier & R. Loth GmbH  
Wood Technology  
An der Bleiche 9  
33813 Oerlinghausen  
Germany

Phone: +49 (0) 5202 / 99689-10  
Fax: +49 (0) 5202 / 99689-90  
E-Mail: info@ml-wood.com  
Web: www.ml-wood.com